



T.A.C.
tube · amp · company

**You just can't
describe good music...**






...you have to experience it!

The Tube Amp Company (T.A.C.)'s pipe range appeals to discerning music lovers who won't accept any compromises when it comes to quality and expect their stereo to provide them with an experience akin to a live concert, in their own home.

All aspects of the products in this range meet these high standards. It was a question of building stereo components that sound great and, at the same time, visually emphasise the high quality of the tubes by using a striking design.

The background of the page features three large, glowing yellow spheres with a bright white center, set against a solid black background. The spheres are positioned in the upper left, upper center, and lower right areas of the page.

The Tube Amp Company (T.A.C.) was founded in the 90s by tube enthusiasts, as part of Sintron Vertriebs GmbH. The aim was and still is to sell tube appliances with a very good price-performance ration.

The first and most important criterion has always been the sound of our tube amps. Numerous tests have shown that our appliances meet these demands. The popularity of our appliances proves that you, as customer, will appreciate our efforts.

We have maintained the good old qualities and it's great when they are combined with lots of emotion and a good sound.



First enthusiasm combines technology and music.

The integrated full amplifier T.A.C.34 is both classic and technical and sound is the first priority.

The traditionally manufactured tube amplifier is a classic from our tube amplifier line. Each channel has two EL34 tubes that work in a push-pull process. A feedback pick-up on the output trafo minimises distortion and constitutes an ultra linear circuit. All sound determining components used are measured prior to installation.

In order to emphasise the pure nature, there is no tone control. Listening tests proved that it isn't necessary.

The option of attaching speakers with very varied impedances to the 4 and 8 ohm outlets also highlights the universal qualities of the T.A.C. 34.



Passion creates harmony in sound.

Still remember the first time you heard your favourite recording on CD? Barclay James Harvest? Nirvana? Nora Jones?

It doesn't really matter what recording it was. What you heard and felt is what really counts. Didn't you find that you were suddenly surrounded by voices that had previously been hidden away? Or did you feel as if you were in a studio, surrounded by sound...





Wouldn't you like to enjoy that special feeling again and experience your music with a completely different sound? Then treat yourself to a T.A.C. 88.

The question of taste, thicker bottles, better performance, tighter tone quality. The basic set up of the preliminary stage of the T.A.C. 88 is different, because 2x6SN7GT and 1x6SL7GT are used for T.A.C.34, which drive the high performing KT88.

An ultra linear circuit is formed by tapping into the output transformer and its feedback. This amplifier operates speakers effortlessly and critically, without ever coming under pressure.



The first stimulus decides on sound and musicality.

We love our work and we want our pipes to offer unique sound quality and exceptional performance. In order to achieve this goal, we spend hour upon hour doing listening tests and trying out different construction elements. We continually set ourselves new challenges, so that we can develop a first class functioning system with unbelievable attention to detail.

Here's what the press say: "with a total of eight EL34 end tubes it provides above-average power for a tube amplifier in its price bracket. Wonderfully open and intoxicating sound. Legendarily impulsive bass, developed right up to the smallest detail." Stereoplay test result - Very Good

What else can we say? The symmetrically arranged triode pre-circuit feeds the end pipes, where four of the pentodes create amplification. The tubes are, of course, preselected and calibrated

The T.A.C. 834 is therefore a high performing amplifier that never loses the lightness and musicality of a tube amp. But we want you to make your own mind up by doing a listening test.





AMP-COMPANY
STEREO INTEGRATED AMPLIFIER

AUX

TUNER

TAPE

CD

SELECTOR

VOLUME

Technical data

Performance data: T.A.C. performance data are different from normal data. T.A.C. gives output performance under the so called Full Disclosure Power conditions: The performance of all channels simultaneously (at 4 and 8 ohms), with minimum distortion and in the full range of frequencies (20 - 20,000Hz).

Dimensions: relate to the appliance housing, without assembled feet / base. In order to reach the total height, max. 15mm must be added. The measuring depth includes clamps, connectors, operating elements or buttons.

Improvements to products and details are a continuous process at T.A.C. Specification and design may be changed without further notification, even after print documents have been completed. For reasons of printing technology, neither the actual colours nor the processing quality can be reproduced.

T.A.C. 34

Power Rating RMS 4-8 Ohm: 40W+40W (0dB, RMS)

Inputs: 4x RCA

Outputs: 2x3 Speaker clamps (4-8 Ohm)

Amplify Linear: 20Hz-60kHz +1.5dB

THD: <1%

S/N: >90dB

Input Impedance: 100 kOhm

Output Load Impedance: 4 oder 8 Ohm

Tube Preamplifier: 4x 6N3(5670)

Power Tube: 4x EL34A

Power Suply: 230V / 50Hz

Dimensions (WxHxD): 430 x 175 x 270 mm

Weight: 18,5 kg

Colour: Black / Chrome



T.A.C. 88

Power Rating RMS 4-8 Ohm: 55W+55W (0dB, RMS)

Inputs: 4x RCA

Outputs: 2x3 Speaker clamps (4-8 Ohm)

Amplifier Linear: 20Hz-80kHz +1.5dB

THD: <1%

S/N: >90dB

Input Impedance: 100 kOhm

Output Load Impedance: 4 oder 8 Ohm

Tube Preamplifier: 1x 6SL7GT / 2x 6SN7GT

Power Tube: 4x KT88

Power Suply: 230V / 50Hz

Dimensions (WxHxD): 430 x 180 x 270 mm

Weight: 19,5 kg

Colour: Black / Chrome



T.A.C. 834

Power Rating RMS 4-8 Ohm: 80W+80W (0dB, RMS)

Inputs: 4x RCA

Outputs: 2x3 Speaker clamps (4-8 Ohm)

Amplifier Linear: 16Hz-100kHz +1.5dB

THD: <1%

S/N: >91dB

Input Impedance: 100 kOhm

Output Load Impedance: 4 oder 8 Ohm

Tube Preamplifier: 2x 12AX7 / 2x 12AU7

Power Tube: 8x EL34A

Power Suply: 230V / 50Hz

Dimensions (WxHxD): 430 x 180 x 270 mm

Weight: 23 kg

Colour: Chrome

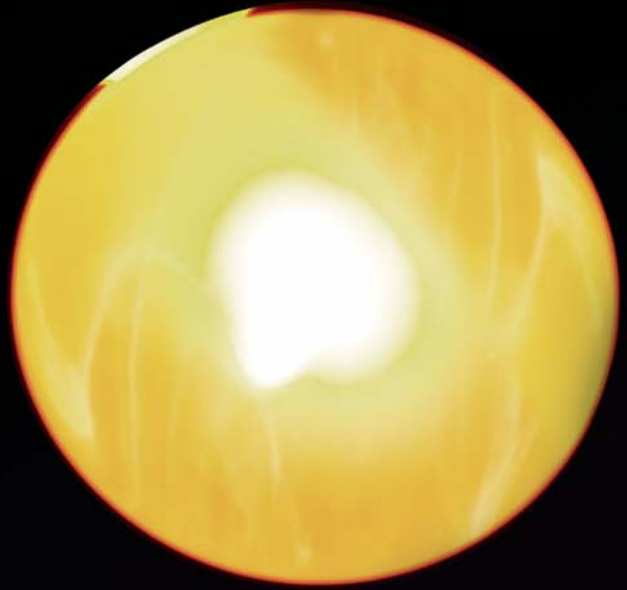




T.A.C.

tube · amp · company

tube amplifier company



www.tube-amp-company.de